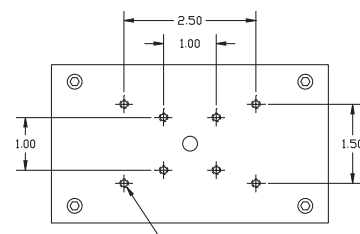


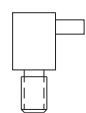
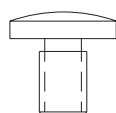
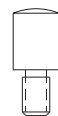
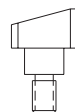
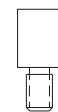
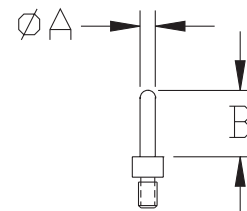
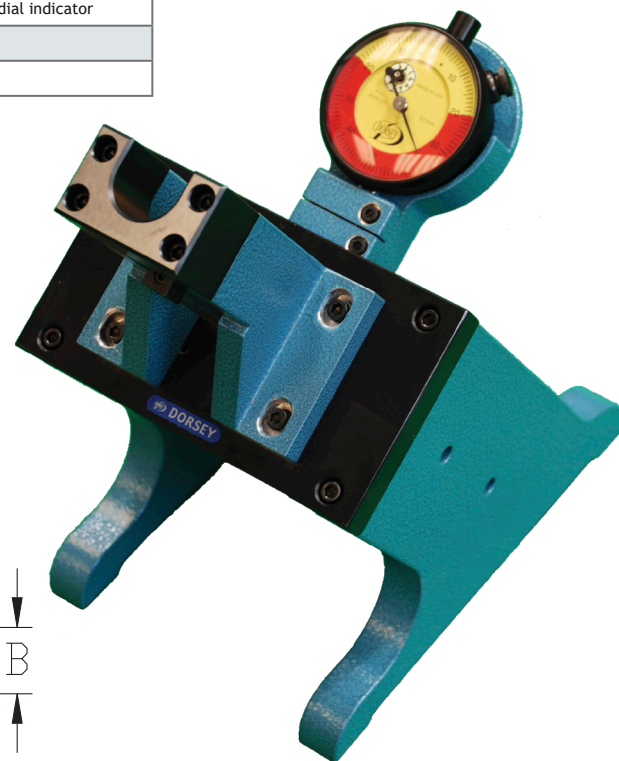
BG Series bench gages are universal indicating depth or flush pin gages used to check depths, lengths, face concentricity, or locations. The BG Direct utilizes various models of dial or digital indicators. The indicator is protected from damage as it is enclosed beneath the gage itself. The rest plate is 3" x 5" hardened and ground steel which has a series of threaded holes. Special nesting rests or holding fixtures and clamps can be mounted to orient parts for measurement of specific dimensions.



BG Direct



Top Plate Hole Pattern

Offset
#2740Mushroom
#297-S
#297-CRadius
#112Needle
#3655Taper
#302Ball
#4082-187-BShovel
#4082-S
#4082-CSFlat
#47076Special contacts
specify A and B dimensions

BG2 Bench Gage

| PART # | DESCRIPTION |
|-----------|--|
| BGD | Model BG Direct with Part #112 steel pin contact and (1" range, .001" graduation) dial indicator |
| BGD-NI | Model BG Direct with Part #112 steel pin contact less indicator |
| BGD-SET | Model BG Direct with set of steel contacts (shown below) (1" range, .001" graduation) dial indicator |
| BGD-SETNI | Model BG Direct with set of steel contacts less indicator |
| BGD-CASE | Fitted Storage Case |

The BG2 utilizes a right angle movement that offers substantial benefits. The indicator, in a protective housing, is mounted above the rest plate in a position that minimizes operator eye movement. The gaging mechanism is reversible, retractable, has a 3" range of measurement travel, and .075" of gaging travel.

| PART # | DESCRIPTION |
|-----------|--|
| BG2 | Model BG with Part #112 steel pin contact and (.0005" graduation) dial indicator |
| BG2-NI | Model BG with Part #112 steel pin contact and less indicator |
| BG2-SET | Model BG with set of steel contacts (shown above) and (.0005" graduation) dial indicator |
| BG2-SETNI | Model BG with set of steel contacts less indicator |
| BG2-CASE | Fitted Storage Case |