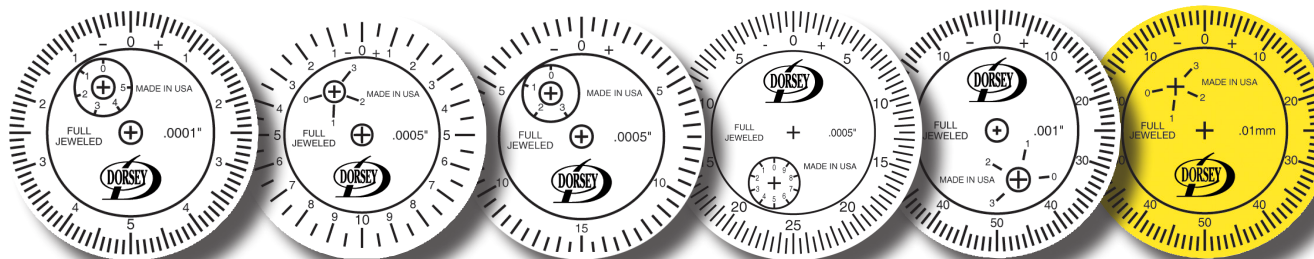
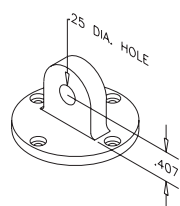


GROUP 1 TRADITIONAL DIAL INDICATORS

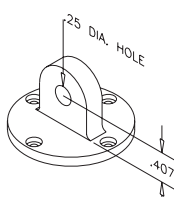


MODEL	1DM025-01	1DM050-05	1DM075-05	1DM125-05	1DM250-10	1DM2-01mm
Graduation	.0001"	.0005"	.0005"	.0005"	.001"	0.01mm
Total Travel	.025"	.050"	.075"	.125"	.250"	2.5mm
Dial*	0-.005"-0	0-.010"-0	0-.015"-0	0-.025"-0	0-.050"-0	0-.050mm-0
Revolutions	2.5 Rev.	2.5 Rev.	2.5 Rev.	2.5 Rev.	2.5 Rev.	2.5 Rev.
Travel/Rev.	.010"	.020"	.030"	.050"	.100"	1.0mm

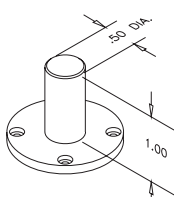
BACK OPTIONS FOR GROUP 1



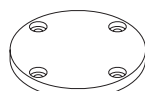
Lug
Part #C201



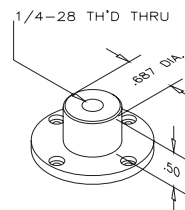
Offset Lug
Part #C221



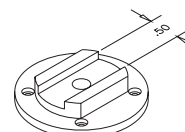
Post
Part #C241



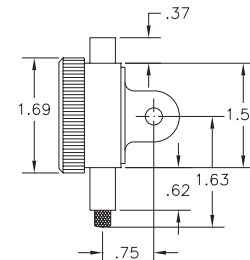
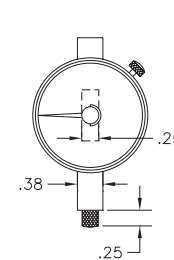
Flat
Part #C211



Screw
Part #C251



Adjustable
Part #C231



Dials can be supplied to your specification: see page 14 for dial face options, page 15 for accessories and contacts.

*Balanced dial shown