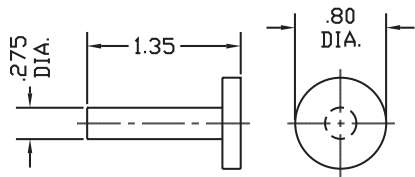


FEATURES:

- Checks multiple shapes: a combination of contact points, backstops, and accessories may be selected and custom assembled to meet the most exacting needs
- Comparative measurements can be made of almost any shape: diameters, spheres, grooves, shafts, flats, etc.
- Specifically designed for Dorsey's high amplification dial indicators with graduations as fine as .00002" (0.0005mm)
- Two frame sizes are available
- Hand held or mounted on an optional bench stand
- Utilizes dial and digital indicators as well as electronic transducers
 - Display on electronic columns or remote digital devices, SPC compatible
- Tailstock fine adjustment of 1" maintains contact parallelism throughout the gaging range
- Standard thumb actuated retraction of .100" makes part loading easy
- Contacts suitable for most applications can be supplied from a wide variety in stock
 - All anvils utilize shank-lock design for maximum holding pressure
- Several backstop designs are available to accommodate a variety of part configurations

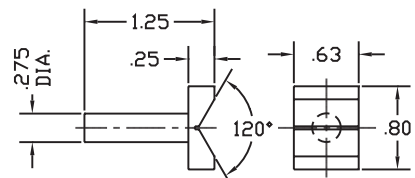
ORDERING INFORMATION

PART #	DESCRIPTION
48554	0 - 1" range versatile snap gage with choice of one set of contacts
48555	1 - 2" range versatile snap gage with choice of one set of contacts
48502-V	Bench Stand for versatile snap gage



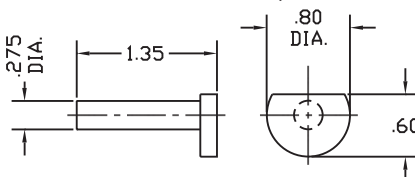
Part #48531

Standard with Gage Flat round backstop



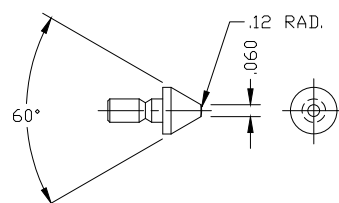
Part #48532

"V" block backstop



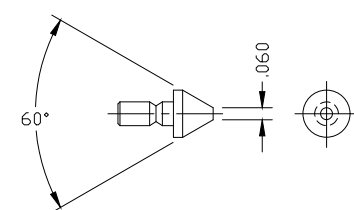
Part #48530

Semi round backstop



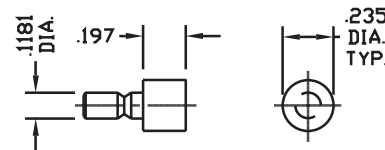
Part #48547-C

Taper Radius



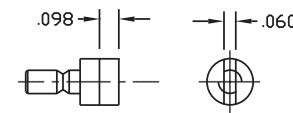
Part #48548-C

Taper Flat



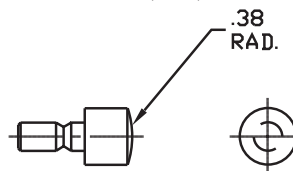
Part #48544-C

Round (.235")



Part #48545-C

Rail (.235")



Part #48546-C

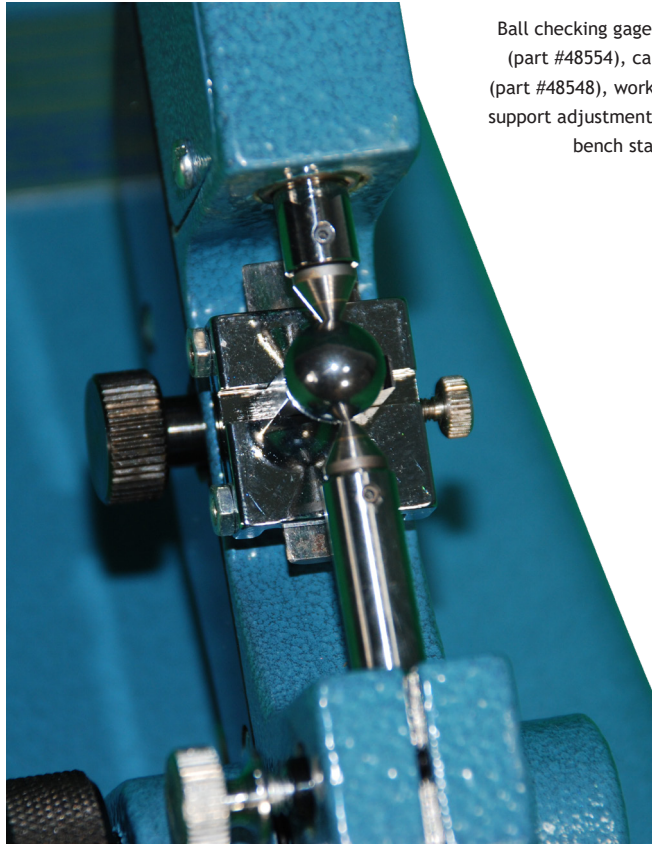
Large Spherical

Part #48554 shown with dial indicator (part #414-002) and bench stand (part #48502-V). Indicator sold separately.



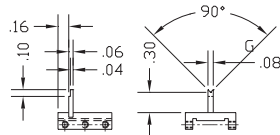
Additional contacts can be found on page 52.

Measuring balls and other spherical items is one of the most popular applications of the Versatile Snap Gage. Two snap gage frames, 0-1" (Part #48554) and 1"-2" (Part #48555) cover the range of ball diameters from the smallest manufactured up to 2" diameter. The "V" backstops have been specially designed to facilitate the measurement of balls.

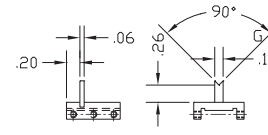


Ball checking gage shown is comprised of gage (part #48554), carbide tapered flat contacts (part #48548), work support (part #48569), work support adjustment assembly (part #48581), and bench stand (part #48502-V)

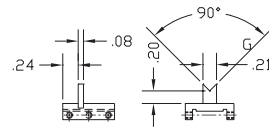
Work Support Note: Work support adjustment assembly part #48581 must be used with work support No.1 through No.6



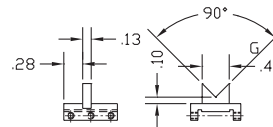
Work support No.1
Part #48568
.060" - .100" balls



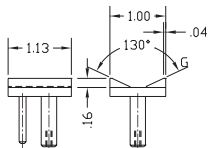
Work support No.2
Part #48569
.100" - .160" balls



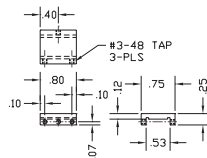
Work support No.3
Part #48570
.160" - .250" balls



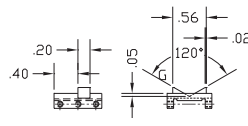
Work support No.4
Part #48571
.250" - .500" balls



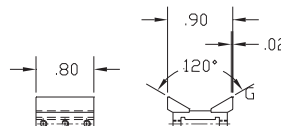
"V" block screw
controlled backstop
Part #48583
1.000" - 2.000" balls



Work support blank
Part #48582



Work support No.5
Part #48572
.500" - 1.000" balls



Work support No.6
Part #48574
1.000" - 1.750" balls

