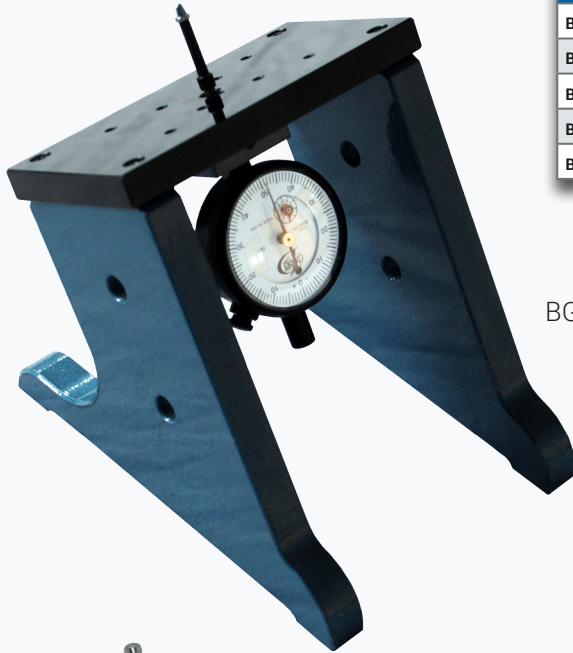


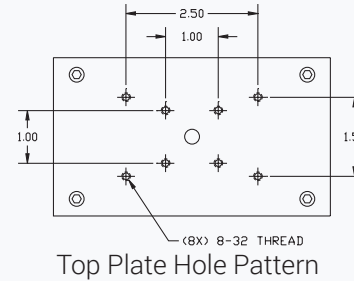
BG DIRECT & BG2 BENCH GAGE

BG Series bench gages are universal indicating depth or flush pin gages used to check depths, lengths, face concentricity, or locations. The BG Direct utilizes various models of dial or digital indicators. The indicator is protected from damage as it is enclosed beneath the gage itself. The rest plate is 3" x 5" hardened and ground steel which has a series of threaded holes. Special nesting rests or holding fixtures and clamps can be mounted to orient parts for measurement of specific dimensions.

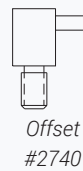
PART #	DESCRIPTION
BGD	Model BG Direct with Part #112 steel pin contact and (1" range, .001" graduation) dial indicator
BGD-NI	Model BG Direct with Part #112 steel pin contact less indicator
BGD-SET	Model BG Direct with set of steel contacts (shown below) (1" range, .001" graduation) dial indicator
BGD-SETNI	Model BG Direct with set of steel contacts less indicator
BGD-CASE	Fitted Storage Case



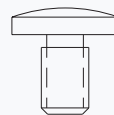
BG Direct



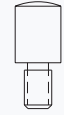
Top Plate Hole Pattern



Offset
#2740



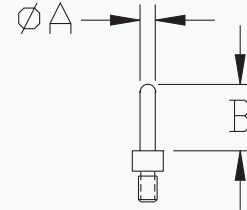
Mushroom
#297



Pin
#112



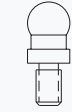
Needle
#3655



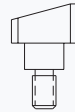
Special contacts
specify A and B dimensions



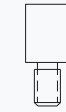
Taper
#302



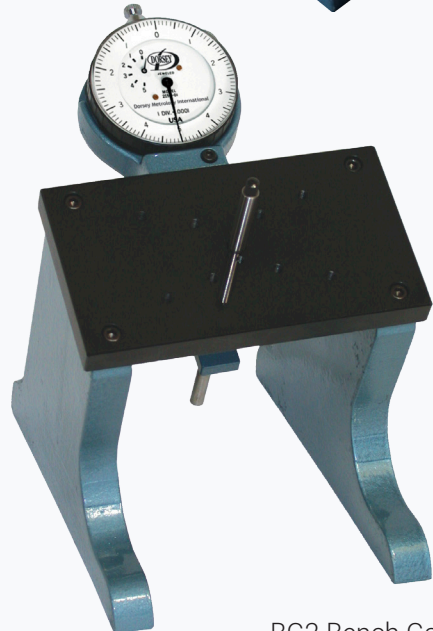
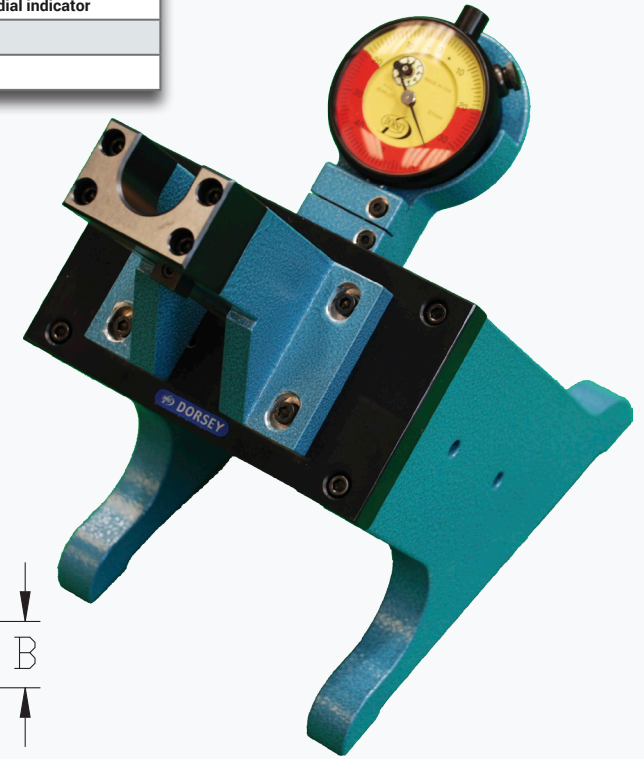
Ball
#4087-187-B



Shovel
#4082S



Flat
#47076



BG2 Bench Gage

The BG2 utilizes a right angle movement that offers substantial benefits. The indicator, in a protective housing, is mounted above the rest plate in a position that minimizes operator eye movement. The gaging mechanism is reversible, retractable, has a 3" range of measurement travel, and .075" of gaging travel.

PART #	DESCRIPTION
BG2	Model BG with Part #112 steel pin contact and (.0005" graduation) dial indicator
BG2-NI	Model BG with Part #112 steel pin contact and less indicator
BG2-SET	Model BG with set of steel contacts (shown above) and (.0005" graduation) dial indicator
BG2-SETNI	Model BG with set of steel contacts less indicator
BGD-CASE	Fitted Storage Case